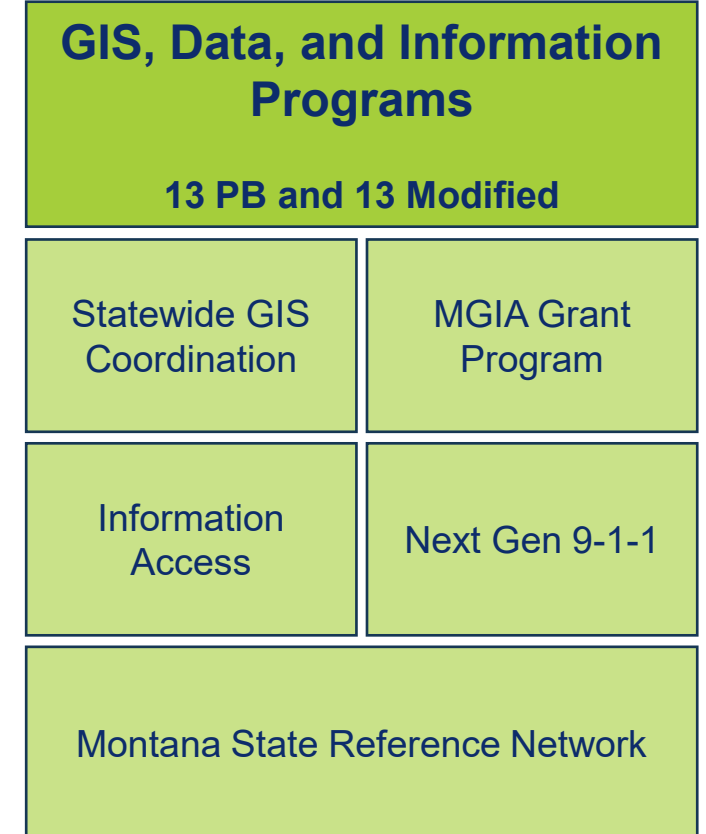
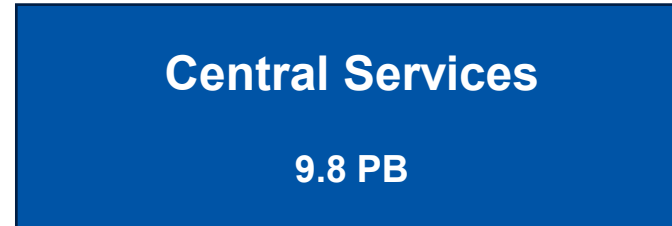




2025 Program Budget Deep Dive  
Education Appropriations Subcommittee

# Montana State Library

We collect and store the public's information and make it available to everyone.



# Investing in MSL helps you, your neighbors, and your communities



# Key Takeaways

MSL's information is reliable.  
We gather it from trusted  
resources.

Our work saves Montana  
taxpayers money.

MSL adds value and helps  
people be self-sufficient.

Like a librarian at your local  
library who helps you find the  
book you need, our staff help  
Montana citizens find the  
information they need.

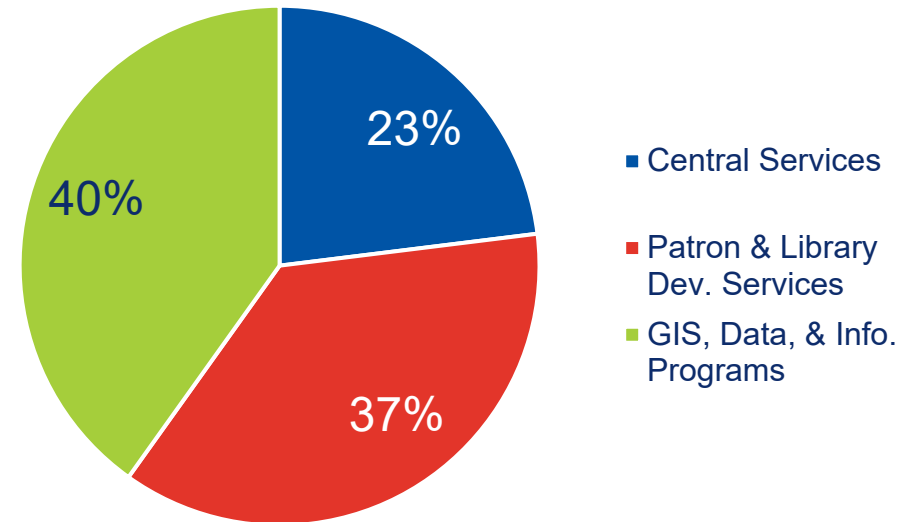
Like libraries that share their  
collections, MSL shares our  
information with anyone who  
needs it.

Yes, our programs are always  
changing but we do it in a  
thoughtful way.

# FY 2024 Expenditures

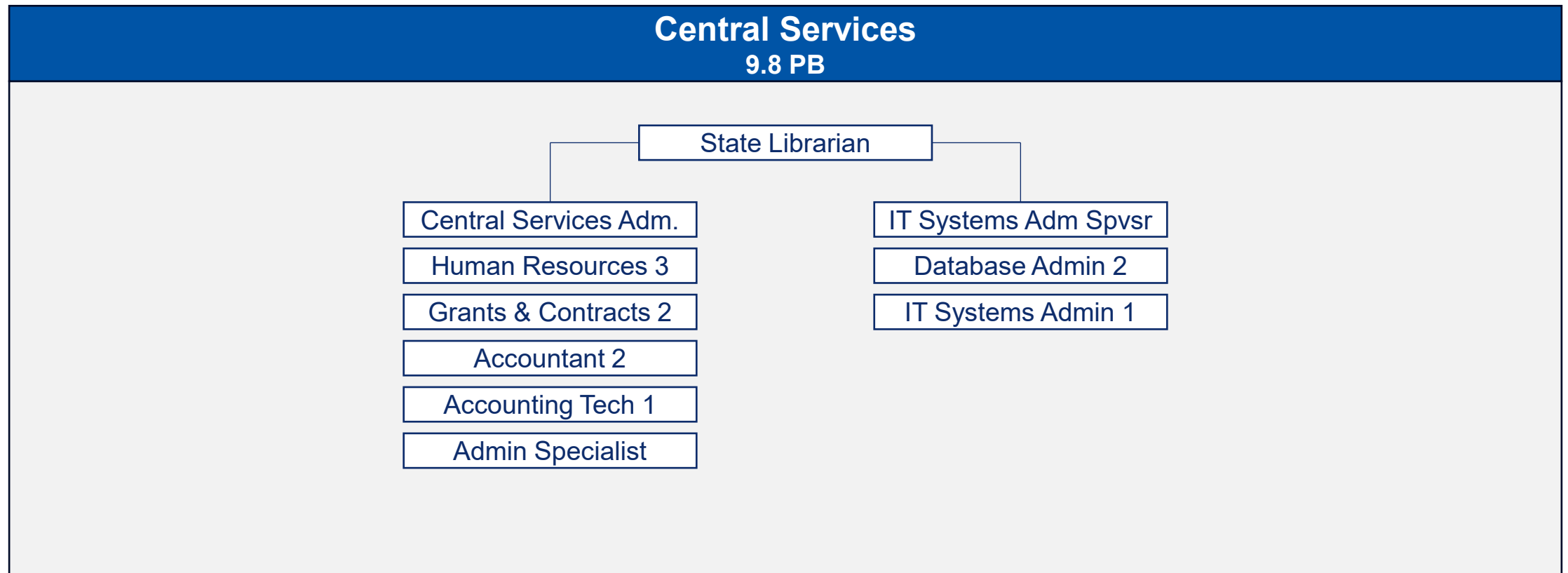
Functional Area	Budget	Expenses	Difference
Central Services	\$2,482,434	\$2,129,841	\$353,245
Patron & Library Dev. Services	\$3,859,165	\$3,405,670	\$453,496
GIS, Data, & Info. Programs	\$5,286,808	\$3,709,772	\$1,577,037
<b>Total</b>	<b>\$11,628,408</b>	<b>\$9,245,282</b>	<b>\$2,383,126</b>

FY 2024 Expenses



# Central Services

Central Services handles day to day operations so  
MSL can deliver exceptional resources and services statewide.

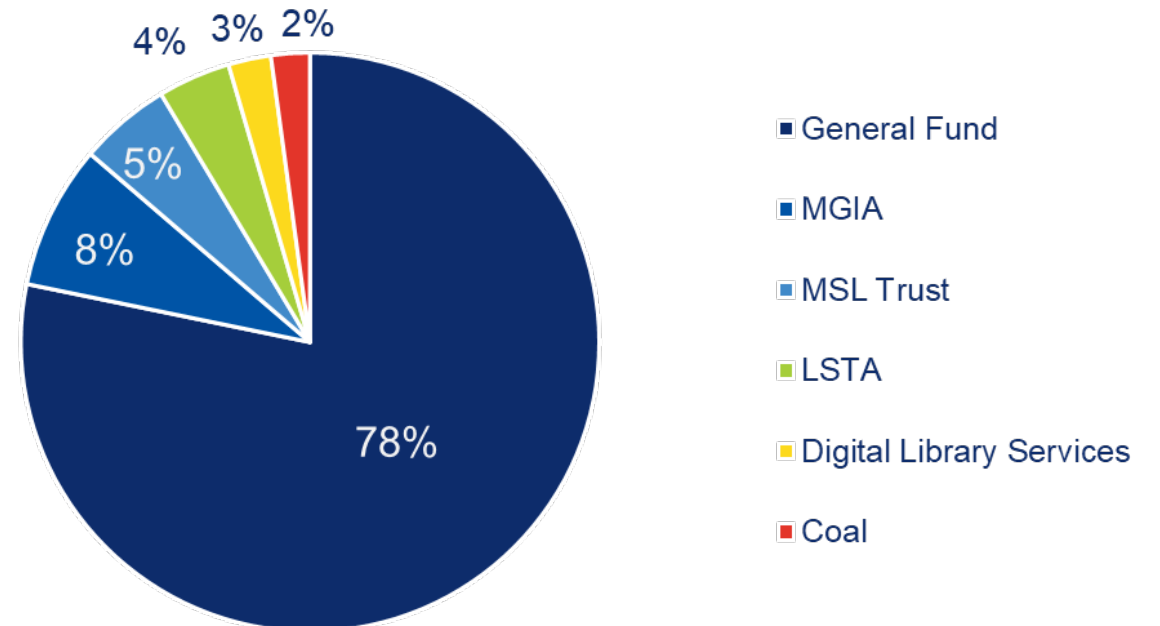


# Central Services

Central Services handles day to day operations so MSL can deliver exceptional resources and services statewide.

Programs and Expenditures	
Personal Services	\$ 964,165
Operating Expenses	\$ 874,489
Grants	\$ 125,296
Debt Services	\$ 165,240
<b>TOTAL</b>	<b>\$ 2,129,190</b>

Revenue Sources



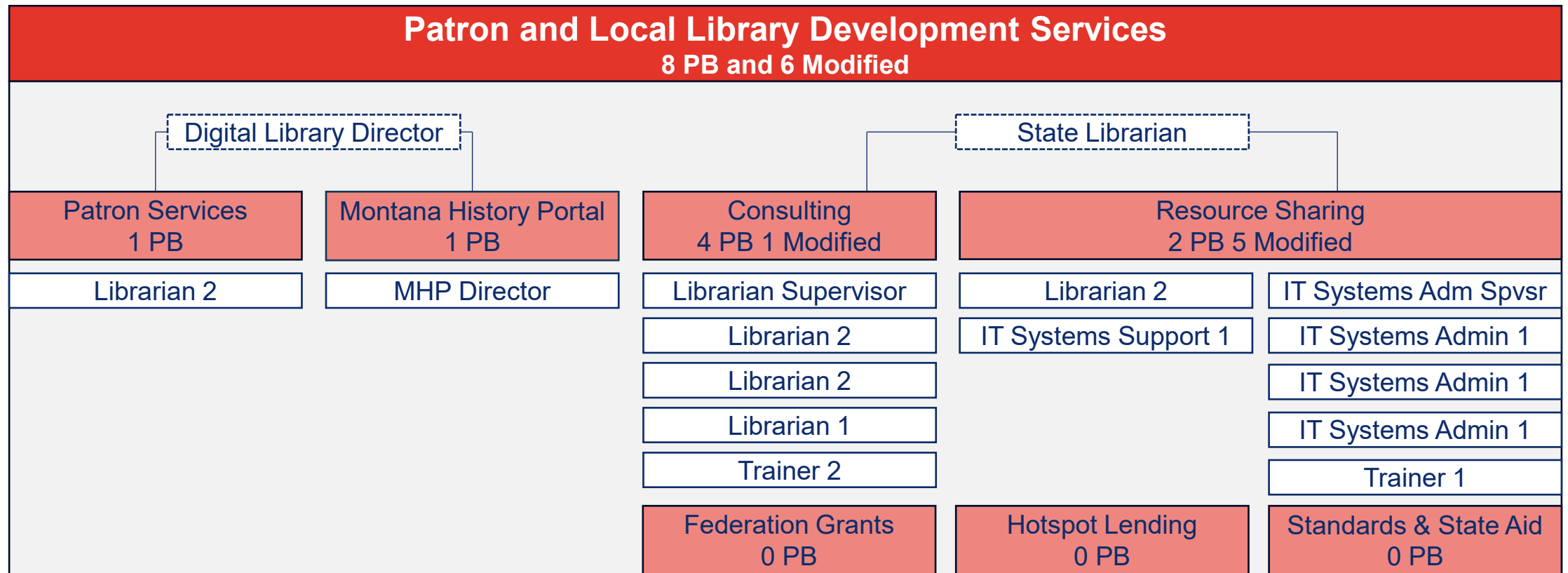
# Central Services

- Benefits from one of the lowest state agency turnover rates.
  - Manages numerous grants and contracts, reducing staffing costs while accomplishing more work.
  - Administer 105 computers, 22 servers, 160 SQL databases, 700 terabytes of data.
  - Fully digital
  - Experience managing remote staff since the 1990s with 30% of workforce remote, saving money on rent.
  - Efficiencies could be realized in IT security services and how SITSD prioritizes and deploys new applications and system upgrades.
- [Activities and cost drivers](#)
  - Outcomes and key performance measures
    - [Financial dashboard](#)
    - [Human resources dashboard](#)
    - [Quarterly contacting report](#)
    - [Information Technology help desk tickets](#)
  - Federal Reporting
    - [Montana – Institute of Museum and Library Services](#)
    - [LSTA Grants to States Program Implementation Evaluation, FFY 2018 – FFY 2022](#)



# Patron and Local Library Development Services

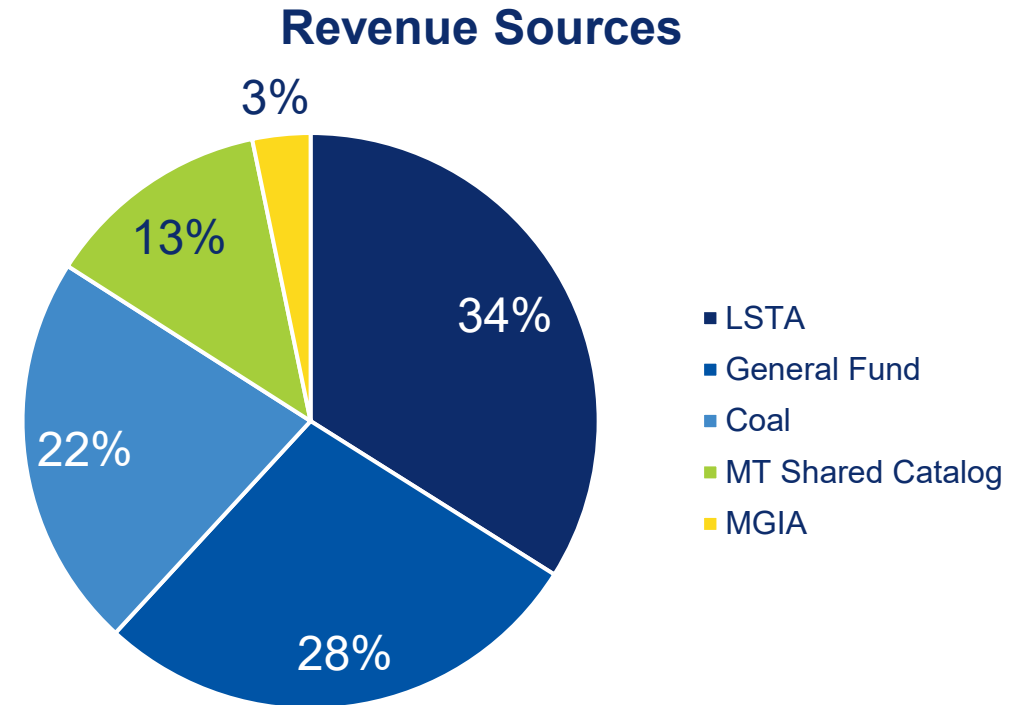
MSL helps Montana libraries be better so that everyone has access to great libraries.



# Patron and Local Library Development Services

MSL helps Montana libraries be better so that everyone has access to great libraries.

Programs and Expenditures	
Resource Sharing	\$ 1,123,464
Consulting	\$ 607,108
Standards and State Aid	\$ 542,113
Hotspot Lending	\$ 414,010
Patron Services	\$ 244,983
Montana History Portal	\$ 225,263
Federation Grants	\$ 249,000
<b>TOTAL</b>	<b>\$ 3,405,940</b>



# Patron Services

MSL provides personalized support to state employees, citizens with research questions, and the blind and low-vision community.

## Patron and Local Library Development Services

### Patron Services 1 PB

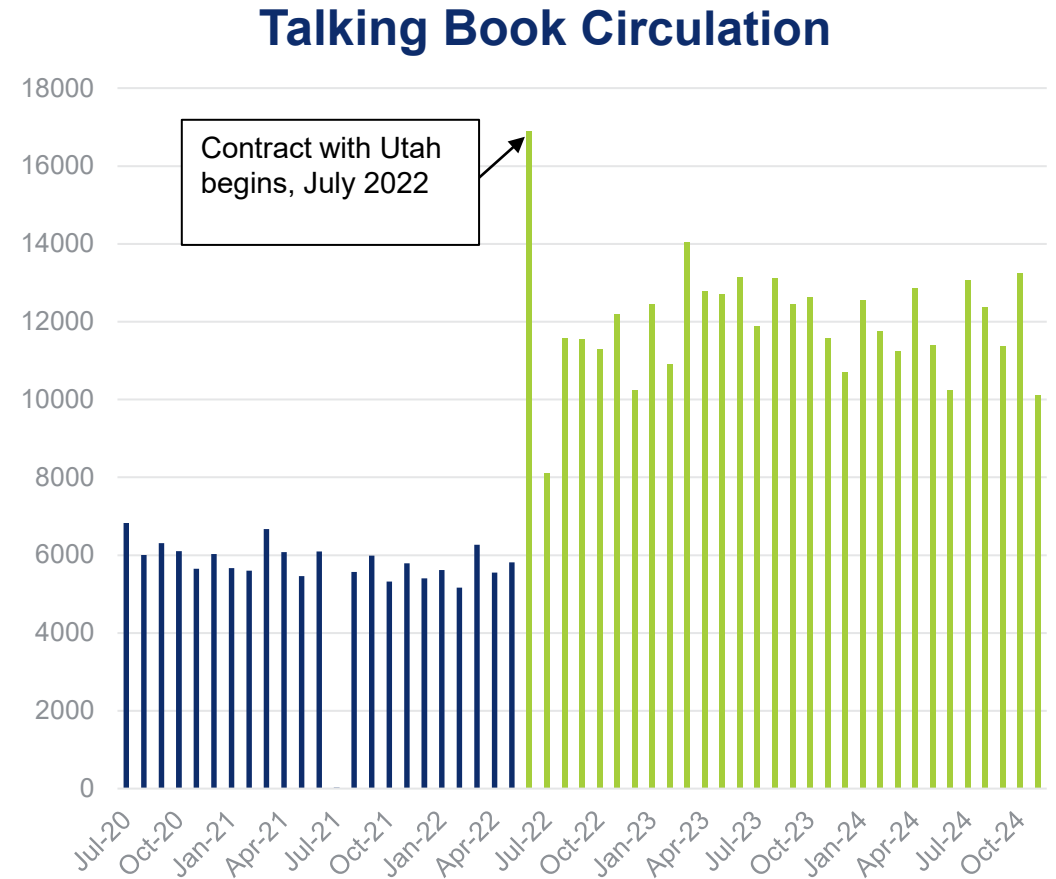
Talking Book  
Services

Research  
Resources and  
Reference  
Services

Account	Fund	Budget	Actual	Balance
61000 Personal Services				
	01100 General Fund	\$130,271	\$129,795	\$476
62000 Operating Expenses				
	01100 General Fund	\$169,040	\$18,662	\$150,378
	03018 LSTA	\$50,000	\$96,526	\$(46,526)
<b>Total</b>		<b>\$349,311</b>	<b>\$244,983</b>	<b>\$104,328</b>

# Talking Book Services

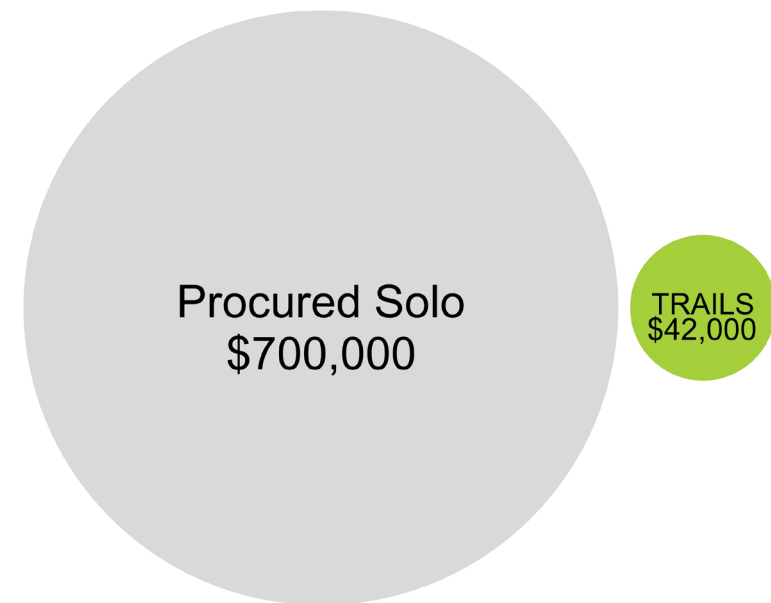
- Supports 2,000 Montanans in 53 counties with 40,000 items borrowed quarterly.
  - Currently recording unique tribal stories.
  - Since 2022, saves \$202,000 annually by contracting with Utah State Library.
  - 40% of Montanans have library cards, fewer than 2% of blind and low vision Montanans are MSL talking book patrons.
- [Relevant statute 22-1-103\(6\)](#)
  - [Activities and cost drivers](#)
  - [Outcomes and key performance measures](#)
  - [Federal Report](#)



# Research Resources and Reference Services

- Partnership with Treasure State Academic Information & Library Services (TRAILS) drives down the cost of academic databases.
- Partnership with MDT to provide professional development eBooks for State employees.
- Access to more than 72,000 journals. Procuring these outside of TRAILS would be cost prohibitive.
- Challenge with promoting these collections.
  - [Relevant statute 22-1-103\(7\)](#)
  - [Activities and cost drivers](#)
  - [Outcomes and key performance measures](#)

## Database Price Comparison



# Consulting

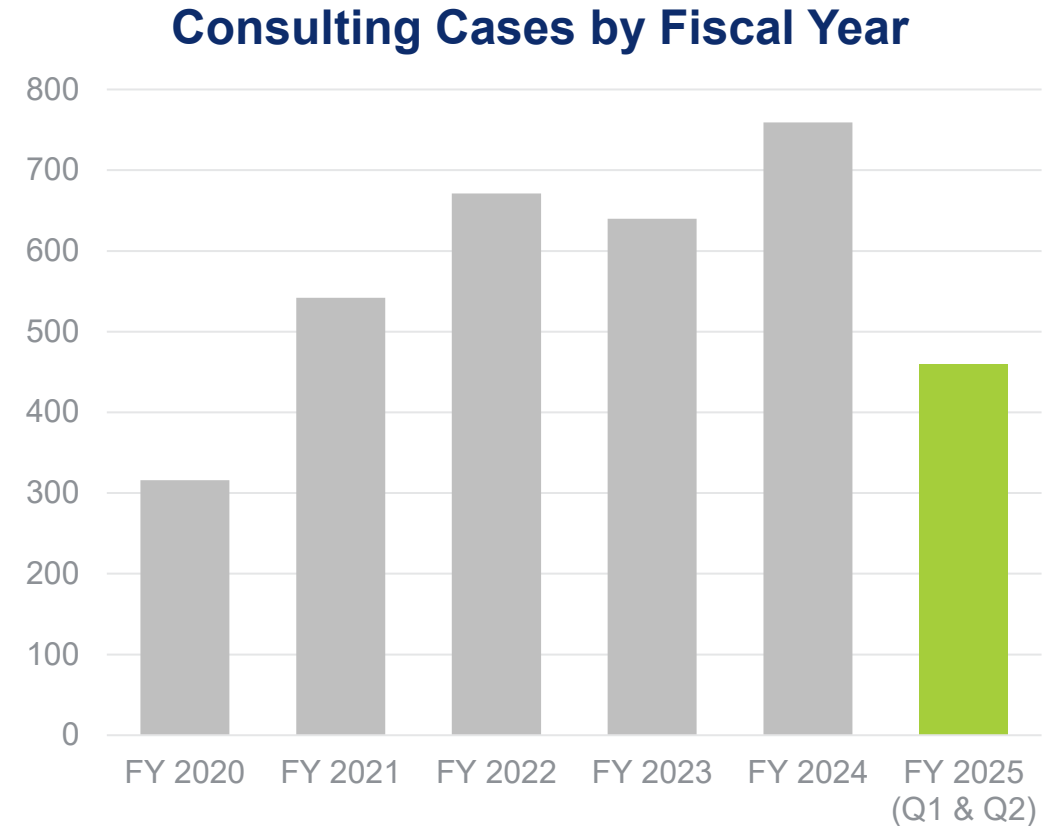
Our consultants offer board trainings, strategic planning support, and professional certifications so that your libraries, regardless of budget or location, meet public library standards maintained by MSL.

Patron and Local Library Development Services	
Consulting 4 PB 1 Modified	
Consulting Services	Continuing Education
Lifelong Learning	

Account	Fund	Budget	Actual	Balance
61000 Personal Services				
	01100 General Fund	\$39,060	\$44,941	\$(5,881)
	02779 Montana Land Information	\$125,634	\$7,332	\$118,302
	03018 LSTA	\$368,312	\$386,955	\$(18,643)
62000 Operating Expenses				
	01100 General Fund	\$46,000	\$11,050	\$34,950
	03018 LSTA	\$125,818	\$156,831	\$(31,013)
<b>Total</b>		<b>\$704,824</b>	<b>\$607,108</b>	<b>\$97,716</b>

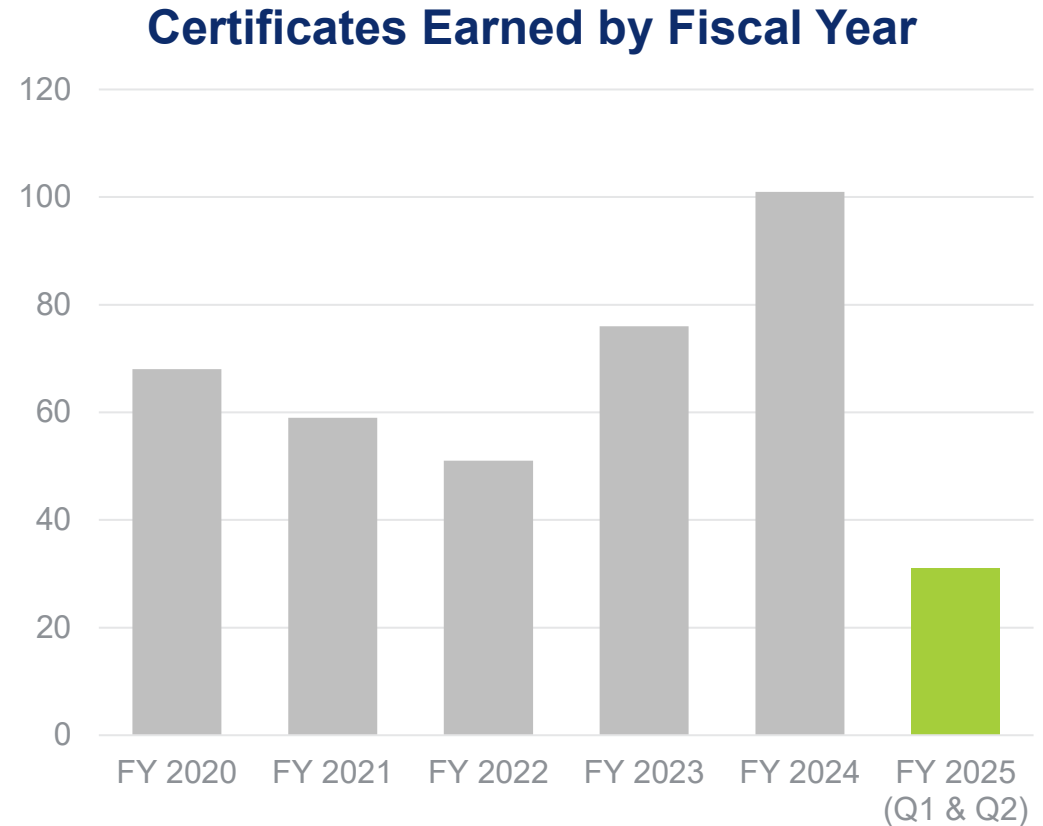
# Consulting Services

- With support from consultants, libraries are better able to meet Montana's Public Library Standards.
- Provide one-on-one support and training to library boards and staff.
- Provide staff support to six library federations.
- Partnership with MSU Local Government Center to leverage and enhance training on matters regarding library law, budgeting, planning.
  - [Relevant statute 22-1-103 \(1\) and \(9\)](#)
  - [Activities and cost drivers](#)
  - [Outcomes and key performance measures](#)
  - [Federal Report](#)



# Continuing Education

- Library directors are required to maintain current certification from the Montana State Library.
- Library trustees are required to complete three CE hours each year.
- Decisions on which specific CE courses is left to the local library to ensure CE best meets needs.
- Investigating off-the-shelf solutions for CE and certification tracking systems.
  - [Relevant statute 22-1-103\(8\)](#)
  - [Activities and cost drivers](#)
  - [Outcomes and key performance measures](#)
  - [Federal Report](#)



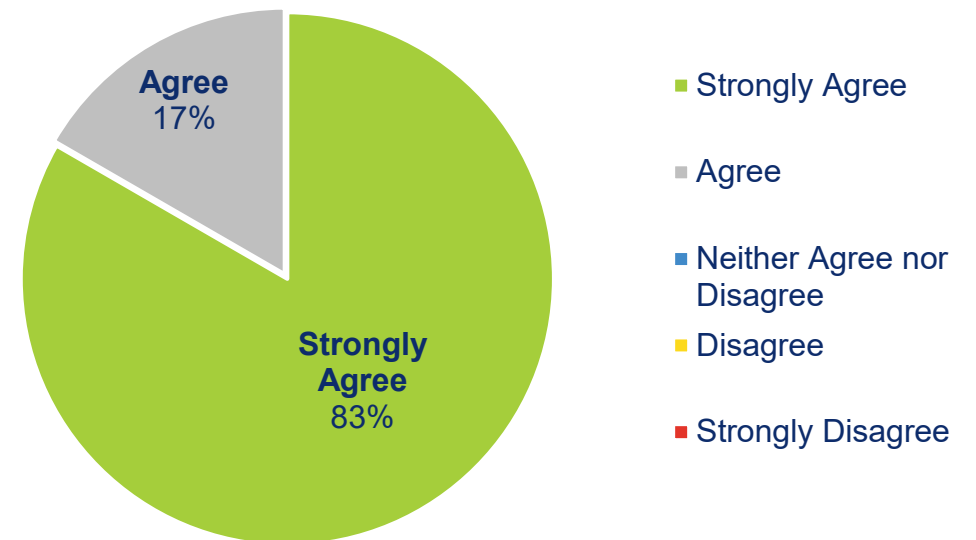


# Lifelong Learning

- Customizable learning and programming activities to empower lifelong learners.
- Primary focus on early childhood learning to grow readers within families and communities.
- 77% of Montana's libraries are served by fewer than three FTE. Scalable solutions are essential.
- Desire to participate in state-level efforts to study how library services improve reading scores.
  - [Relevant statute 22-1-103\(1\)](#)
  - [Activities and cost drivers](#)
  - [Outcomes and key performance measures](#)
  - [Federal Report](#)

## Ready to Read Rendezvous Librarian Early Literacy Training

**"I intend to apply what I just learned."**



# Resource Sharing

MSL operates Montana's digital card catalog. If you've ever borrowed a book from another library or downloaded an audiobook from the Libby app, then you've used programs that are administered by MSL.

## Patron and Local Library Development Services

Resource Sharing  
2 PB, 5 Modified

Montana Shared  
Catalog (MSC)

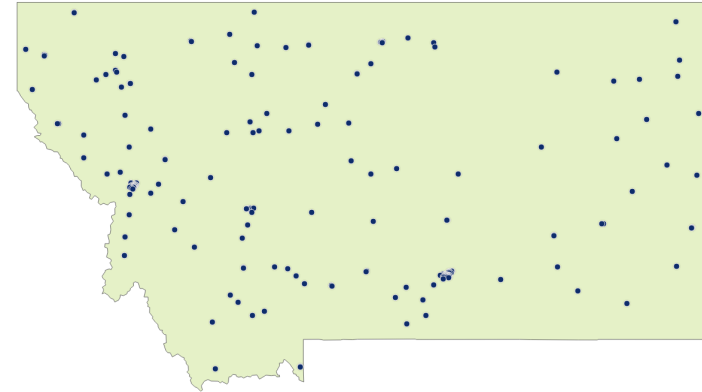
Montana Library  
Network

Account	Fund	Budget	Actual	Balance
61000 Personal Services				
	01100 General Fund	\$137,133	\$85,487	\$51,646
	02046 Coal Sev. Tax Library	\$ -	\$27,955	\$27,955)
	03018 LSTA	\$272,169	\$267,619	\$4,550
	06021 MT Shared Catalog	\$219,923	\$256,731	\$(36,808)
62000 Operating Expenses				
	01100 General Fund	\$13,260	\$99,373	\$(86,113)
	02046 Coal Sev. Tax Library	\$107,553	\$52,948	\$54,605
	03018 LSTA	\$221,099	\$201,373	\$19,726
	06021 MT Shared Catalog	\$98,870	\$(563,794)	\$662,664
69000 Debt Service				
	02046 Coal Sev. Tax Library	\$100,000	\$100,000	\$ -
	06021 MT Shared Catalog	\$171,447	\$595,772	\$(424,325)
<b>Total</b>		<b>\$1,341,454</b>	<b>\$1,123,464</b>	<b>\$217,990</b>

# Montana Shared Catalog

- Support and system administration for a cloud-based library management system that serves as a digital library catalog for library patrons.
- 210 Montana public, school, academic, and special libraries.
- Allows libraries of all sizes to have a high-quality catalog that would otherwise be beyond the capacity of most Montana libraries.
- Billings Public Library pays about \$40,000 a year for a system that would otherwise cost them twice that. Phillipsburg Public Library pay just \$1,000 a year for the same system.
- Fourteen libraries find the cost prohibitive.

MSC Participating Libraries

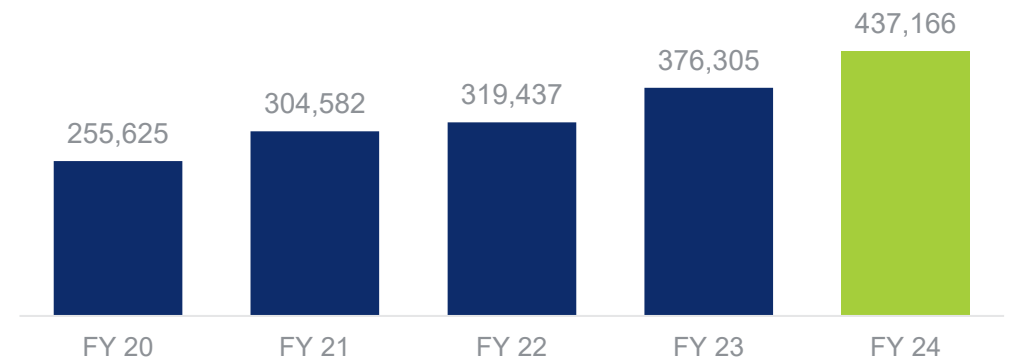


- [Relevant statute 22-1-103 \(1\), \(4\), and \(7\)](#)
- [Activities and cost drivers](#)
- Outcomes and key performance measures
  - [Montana Shared Catalog dashboard](#)
  - [MSC Online Catalog dashboard](#)
  - [Help desk dashboard](#)
- [Federal Report](#)

# Montana Library Network

- MSL focuses on cost-effective access to library services statewide, aiming to expand courier coverage.
- MontanaLibrary2Go provides e-books and digital resources, but high demand leads to average 59-day wait times.
- Courier services save \$2.5M annually in shipping but currently serves just 46% of libraries, leaving many regions unserved.
- COVID funds upgraded broadband in 39 libraries, boosting speeds by up to 400%.
- Courier and library groups boost patron demand, with the two latest members seeing increases of 4,700% and 1,300%, respectively.

**Total Interlibrary Loans Borrowed  
Statewide**



- [Relevant statute 22-1-103 \(1\), \(4\), and \(7\)](#)
- [Activities and cost drivers](#)
- Outcomes and key performance measures
  - [Resource Sharing dashboard](#)
  - [Library Networks dashboard](#)
  - [Help desk dashboard](#)
- [Federal Report](#)

# Montana History Portal

Montana's history belongs to you.

The Montana History Portal website allows you to discover your Montana story.

## Patron and Local Library Development Services

MT History Portal  
1 PB

Account	Fund	Budget	Actual	Balance
61000 Personal Services				
	03018 LSTA	\$176,979	\$171,931	\$5,048
62000 Operating Expenses				
	03018 LSTA	\$95,484	\$53,331	\$42,153
<b>Total</b>		<b>\$272,463</b>	<b>\$225,263</b>	<b>\$47,201</b>

# Montana History Portal

From the Going-to-the-Sun Road Collection

- Centralized system for libraries to manage and share digitized collections about Montana's history and culture.
- Collaborates with the Montana Historical Society to bring content into classrooms through curriculums and student-led content creation.
- Supports historical research, genealogy, and creative programs like Lego building and short story contests inspired by its collections.
- Virtual programming and public engagement initiatives make MHP an interactive resource for libraries and communities.



- [Relevant statute 22-1-103 \(1\) and \(4\)](#)
- [Activities and cost drivers](#)
- Outcomes and key performance measures
  - [Montana History Portal dashboard](#)
  - [Help desk dashboard](#)
- [Federal Report](#)

# Hotspot Lending

MSL lends hotspots to Montana's library patrons where broadband internet may be too expensive or not available.

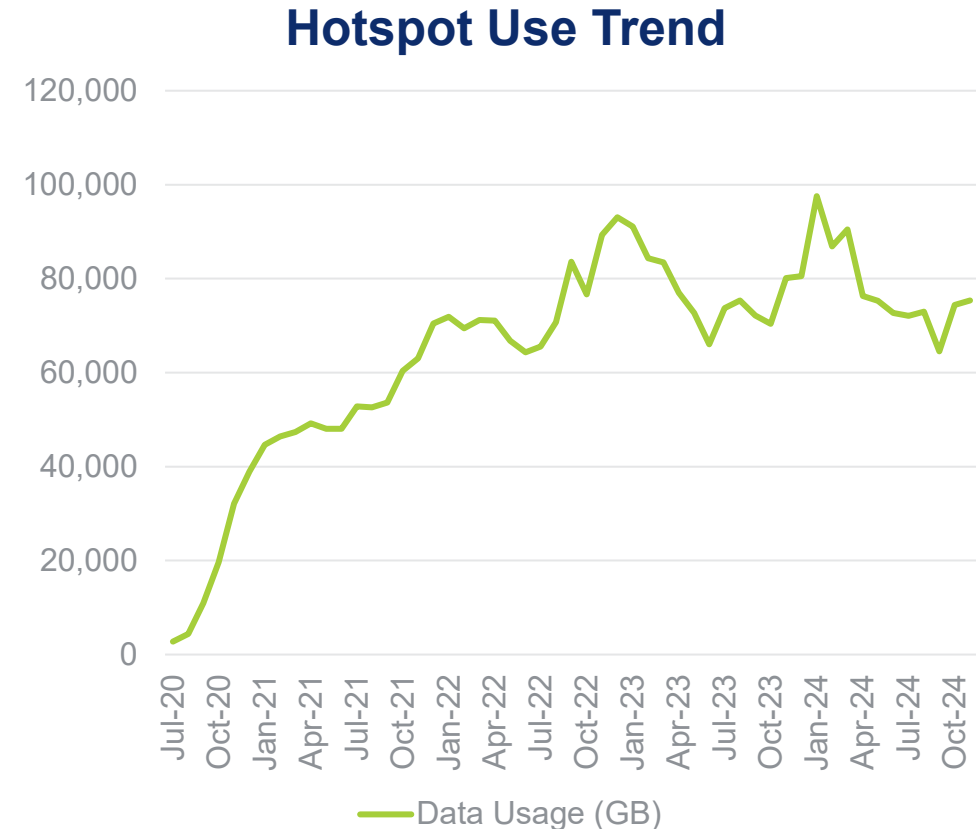
## Patron and Local Library Development Services

Hotspot Lending  
0 PB

Account	Fund	Budget	Actual	Balance
62000 Operating Expenses				
	02046 Coal Sev. Tax Library	\$400,000	\$414,010	\$(14,010)
<b>Total</b>		<b>\$400,000</b>	<b>\$414,010</b>	<b>\$(14,010)</b>

# Hotspot Lending Program

- Launched during COVID-19 to provide Internet access, MSL owns and distributes over 850 hotspots to 88 libraries statewide.
- In FY 24 and 25, staff shifted inventory of hot spots to areas with the greatest need and ability to administer the program.
- Two pending federal grant applications could extend funding for up to five years.
- State contracts reduce costs and Nemont donates cost differences in underserved NE Montana.
  - [Activities and cost drivers](#)
  - [Outcomes and key performance measures](#)
  - [Federal Report](#)





# Federation Grants

MSL supports the 6 regional library groups by providing trustee training and supporting local and regional initiatives.

## Patron and Local Library Development Services

Federation Grants  
0 PB

Account	Fund	Budget	Actual	Balance
62000 Operating Expenses				
	02046 Coal Sev. Tax Library	\$249,000	\$249,000	\$0
<b>Total</b>		<b>\$249,000</b>	<b>\$249,000</b>	<b>\$0</b>

# Federation Grants

- Six federations meet twice yearly for training, service planning, and grant prioritization.
- Meetings focus on training and mentorship for library trustees, a key MSL priority.
- Most services are more cost-effective when delivered statewide, but federations address regional challenges and networking needs.
- Taskforce explored regional delivery of tech support and digital navigators for greater impact.
  - Relevant statutes [22-1-103 \(9\)](#), [22-1-401](#), [22-1-402](#), [22-1-404](#), [22-1-405](#), [22-1-412](#)
  - [Outcomes and key performance measures](#)
  - [Federal Report](#)

## Activities and Cost Drivers FY 2025 Federation Plans of Service

- [Broad Valleys Federation](#)
- [Golden Plains Federation](#)
- [Pathfinder Federation](#)
- [Sagebrush Federation](#)
- [South Central Federation](#)
- [Tamarack Federation](#)

# Public Library Standards & State Aid

MSL distributes funding to Montana public libraries that comply with the statewide standards set by MSL.

## Patron and Local Library Development Services

Public Library Standards & State Aid  
0 PB

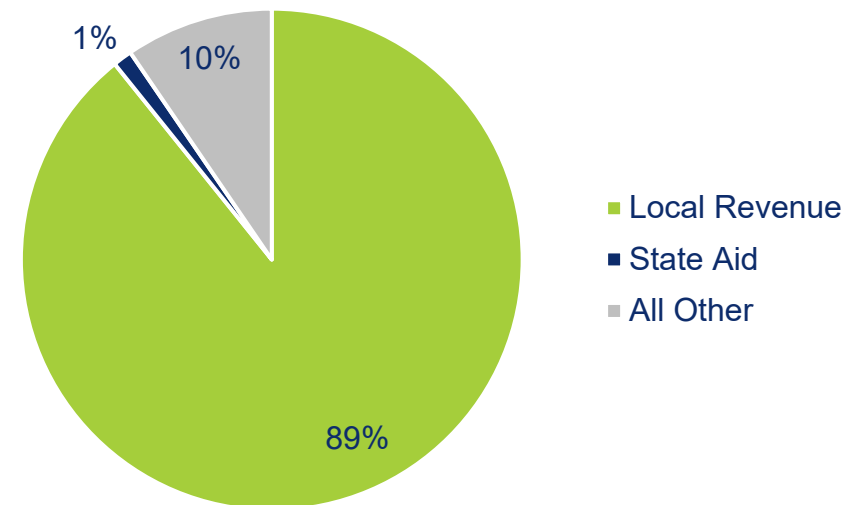
Account	Fund	Budget	Actual	Balance
66000 Grants				
	01100 General Fund	\$542,113	\$542,113	\$0
<b>Total</b>		<b>\$542,113</b>	<b>\$542,113</b>	<b>\$0</b>

# Public Library Standards & State Aid

- In FY25, 81% (70 libraries) met standards; 17% (15 libraries) received deferrals; 1 library lost state aid due to non-compliance.
- 4 tribal college libraries received state aid for the first time.
- 100% of funding passes through MSL, providing ~1% of total library revenue; expenditures are locally determined.
- Staff manage reporting, review deferrals, and assist libraries in meeting standards.

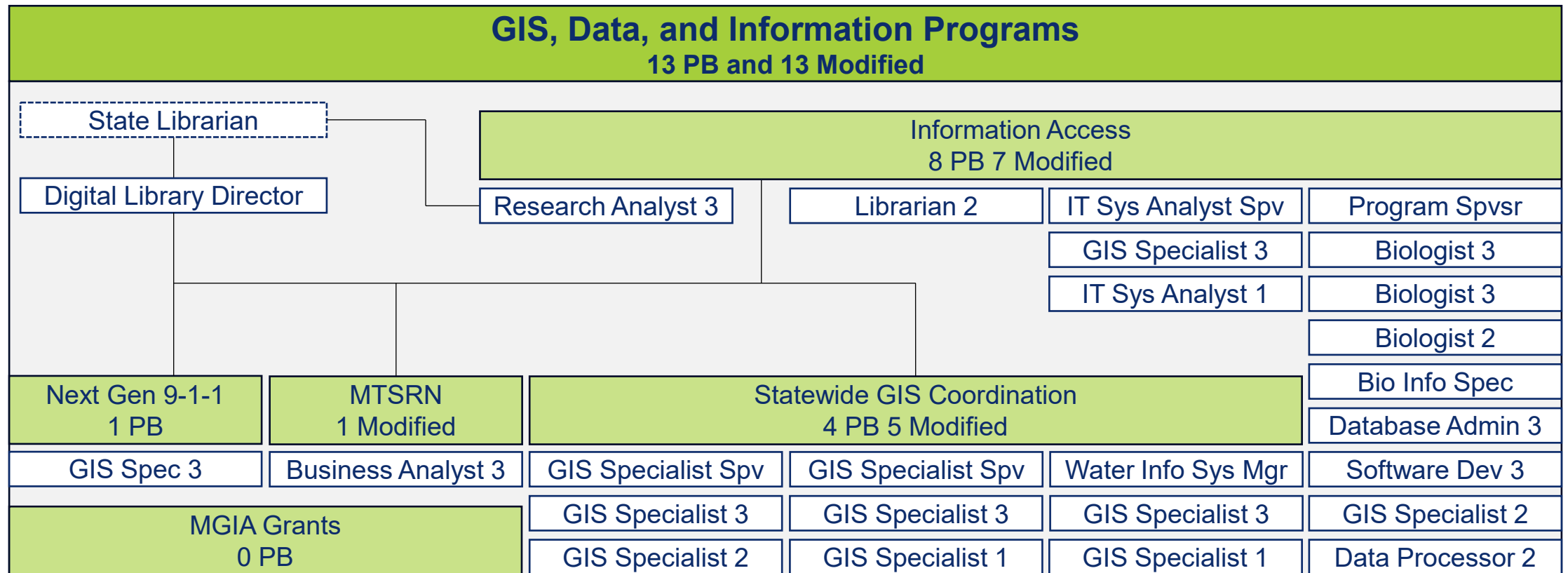
➤ Relevant statutes [22-1-103 \(5\)](#), [22-1-326](#), [22-1-327](#)

**FY 2024 Public Library Operating Revenue**



# GIS, Data, and Information Programs

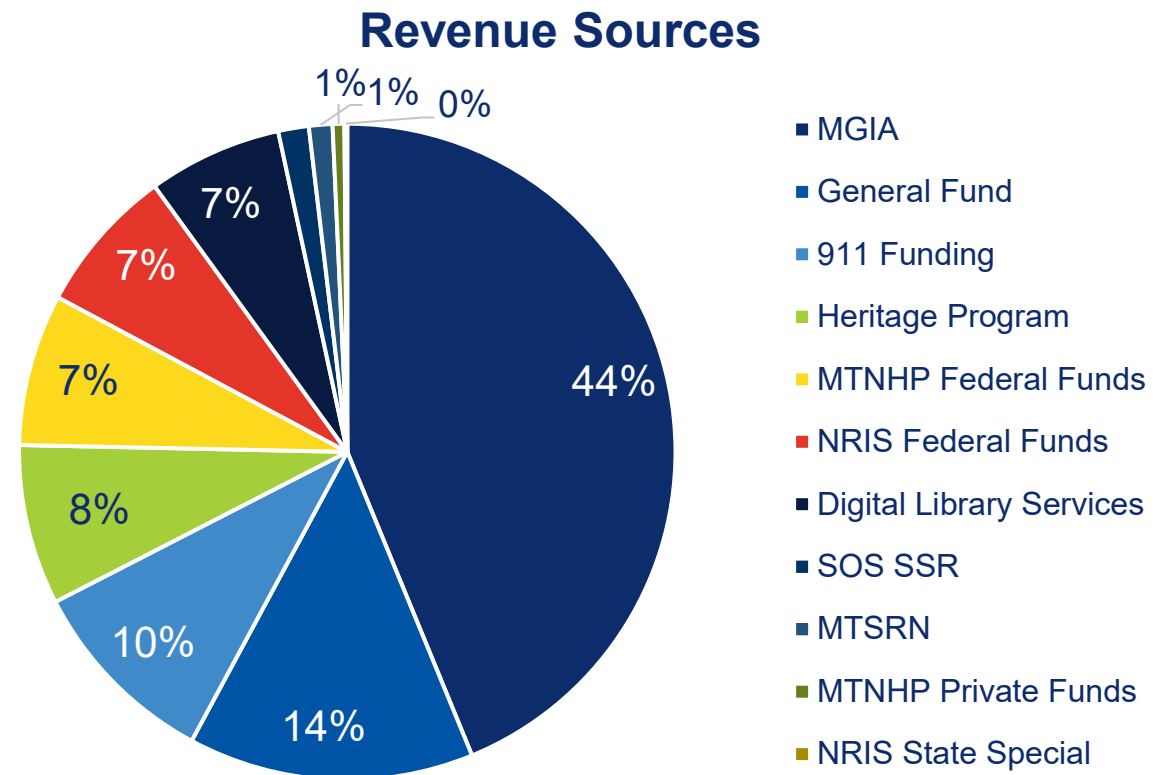
MSL gathers knowledge about Montana for Montanans and makes it available at the click of a button.



# GIS, Data, and Information Programs

MSL gathers knowledge about Montana for Montanans and makes it available at the click of a button.

Programs and Expenditures	
Information Access	\$ 2,424,130
GIS Coordination	\$ 458,304
Next-Gen 911	\$ 496,594
MTSRN	\$ 132,035
MGIA Grants	\$ 198,708
<b>TOTAL</b>	<b>\$ 3,709,772</b>



# Information Access

Chances are you have used our cadastral website or the MT Field Guide. These are among the many online resources MSL provides.

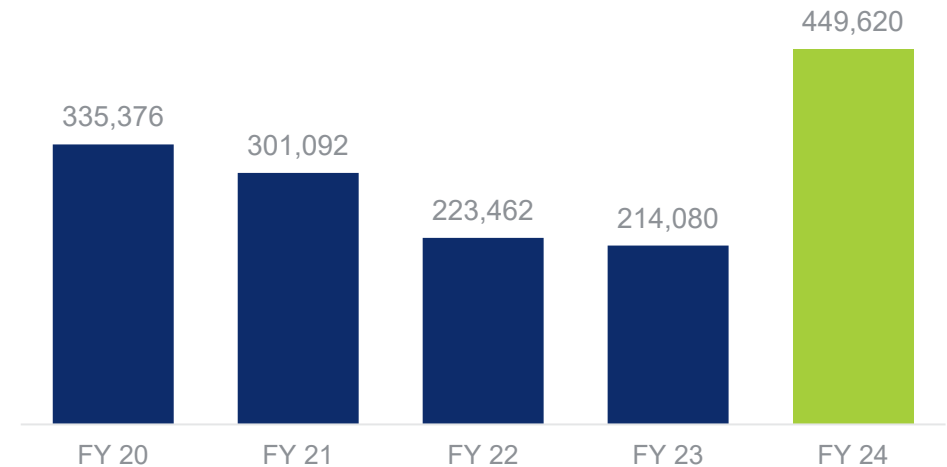
GIS, Data, and Information Programs	
Information Access 8 PB, 7 Modified	
Government Information	Natural Resource Information System (NRIS)
Natural Heritage Program	Water Information
Land Information	Information Products
Data Coordination	

Account	Fund	Budget	Actual	Balance
61000 Personal Services				
	01100 General Fund	\$704,430	\$876,065	\$(171,634)
	02026 NRIS State Special	\$4,161	\$0	\$4,161
	02094 Digital Library Services	\$342,412	\$331,491	\$10,921
	02337 Heritage Program	\$292,211	\$225,725	\$66,487
	02779 Montana Land Information	\$701,344	\$447,745	\$253,600
	03268 MTNHP Federal Funds	\$277,834	\$206,461	\$71,373
	03930 NRIS Federal Funds	\$267,875	\$74,647	\$193,228
	08168 MTNHP Private Funds	\$26,000	\$24,488	\$1,512
62000 Operating Expenses				
	01100 General Fund	\$24,898	\$36,818	\$(11,920)
	02026 NRIS State Special	3,050	\$0	\$0
	02094 Digital Library Services	\$0	\$658	\$(658)
	02337 Heritage Program	\$116,783	\$66,212	\$50,570
	02779 Montana Land Information	\$408,669	\$22,364	\$386,305
	03018 IMLS	\$47,500	\$37,099	\$10,401
	03268 MTNHP Federal Funds	\$109,583	\$62,894	\$46,689
	03930 NRIS Federal Funds	\$105,498	\$7,465	\$98,033
	08168 MTNHP Private Funds	\$4,000	\$4,000	\$0
<b>TOTAL</b>		<b>\$3,436,247</b>	<b>\$2,424,130</b>	<b>\$1,009,067</b>

# Government Information

- Since 1967, MSL ensures public access to state government information with 32,000+ digitized publications online, dating back to 1864.
- Legislation in 2007 expanded access to digital formats and web archiving, with automated crawls covering state agency websites since 1996.
- Transition from print to digital reduces costs and increases public access to government info.
- Collaborating with the Office of Public Information Requests (OPIR) and exploring AI for improved cataloging and discovery of state publications.

**Government Publication Pageviews**



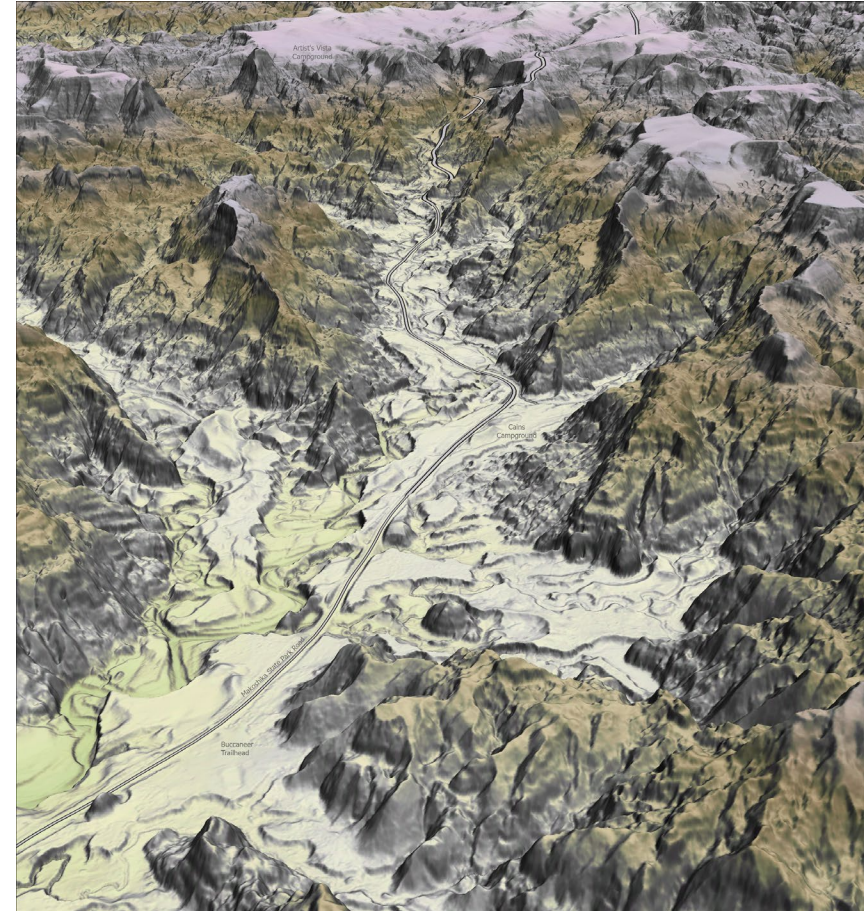
- Relevant statutes [22-1-212](#), [22-1-213](#), [22-1-219](#)
- [Activities and cost drivers](#)
- [Outcomes and key performance measures](#)



# Natural Resource Information System

2024 Lidar Image of Makoshika State Park

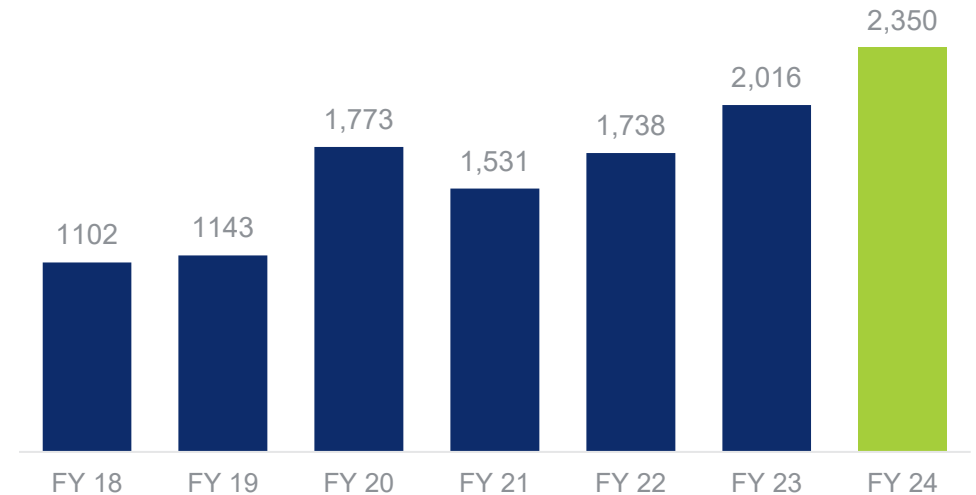
- Established in 1983 under the Department of Administration; moved to MSL in 1985 to prevent duplication and ensure public access.
- Early adopter of GIS software to manage and map Montana's natural resource information.
- NRIS is one of the most complete and highly regarded natural resource data programs in the country.



# Montana Natural Heritage Program

- Provides detailed information on Montana species, habitats, and invasive species through online tools like Montana Field Guide and Map Viewer, saving time and money for users.
- Supports land use planning, speeds regulatory work, and industries like timber through tools that meet certification requirements for higher market value.
- Environmental Summary Reports meet MEPA requirements in seconds, saving developers and consulting firms hundreds of thousands.
- Lack of staff limits data on invertebrate species and habitat changes, impacting pollinator conservation, invasive species management, and wildfire adaptation planning.

Reports Downloaded from Map Viewer

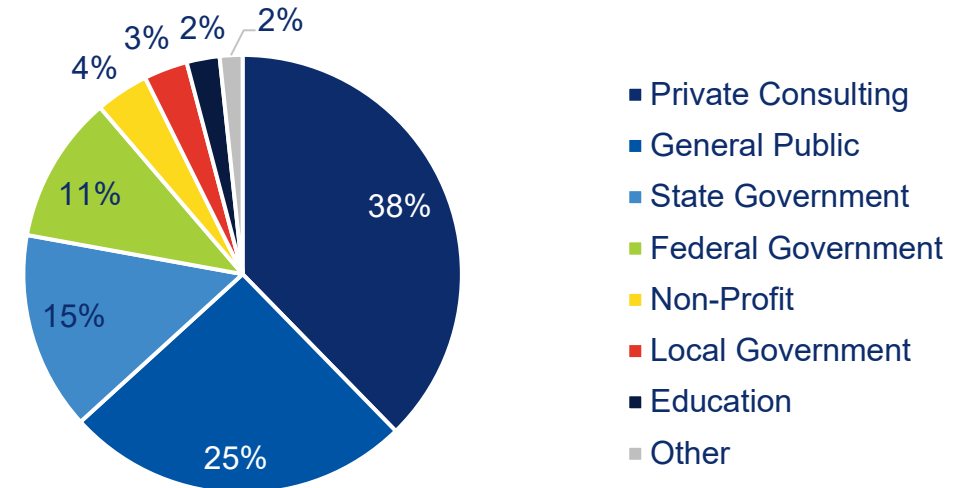


- Relevant statutes [90-15-301](#), [90-15-302](#), [90-15-303](#)
- [Activities and cost drivers](#)
- [Outcomes and key performance measures](#)

# Water Information System

- Collects and provides access to Montana's water resources, drought status, and hydrography data.
- Launched a real-time drought and flood impact reporting tool in 2017 which is also an important archive of changing weather conditions in MT.
- Coordinated collection of \$30-\$40M statewide lidar data at minimal cost to Montana and supports floodplain mapping, property assessments, and GIS apps.
- Periodic lidar refresh required for areas impacted by significant landscape changes such as 2022 floods in southcentral Montana.

**Lidar Data Use by Business Sector**



- Relevant statute [90-15-305](#)
- [Activities and cost drivers](#)
- Outcomes and key performance measures
  - [Lidar acquisition status map](#)
  - [Drought status maps and condition reporting](#)

# Montana Spatial Data Infrastructure

- Fifteen statewide mapping themes that help people view, explore, understand and analyze Montana's geography and mapped information.
- Data is informed by federal data standards under the National Spatial Data Infrastructure (NSDI).
- MTNHP, WIS and Land Information staff lead several of the MSDI themes.
- MSL partners with other state and federal agencies, and the Montana University System, to support the development of the MSDI.
- Geospatial data creation is most cost effective when collected at the source.
- Local government partnerships are essential to create authoritative data without duplication.

## Montana Spatial Data Infrastructure (MSDI)

15 statewide federated geographic data themes for viewing, analyzing, exploring, and understanding Montana's geography.

Administrative Boundaries	Legally documented and attributed jurisdictional boundaries	Montana State Library
Cadastral	Public & private land ownership information, the digital representation of the Public Land Survey System (PLSS - section, township & range), conservation easements, and public lands.	Montana State Library
Climate	30-year summaries of climate data, along with both annual and monthly variables (e.g., precipitation and max./min. temperatures).	University of Montana
Elevation	A digital representation of the elevation of the earth's surface at defined intervals.	Montana State Library
Geographic Names	Names (both official and alternate) and location for natural features (i.e., streams, peaks, valleys), named communities, historic buildings, and other cultural or man-made features.	Montana State Library
Geology	Best available digital geology data representing the geologic features of the State of Montana	Montana Bureau of Mines & Geology
Hydrography	Surface water information that provides direction of flow, (i.e., lakes, ponds, streams, springs, rivers, canals, ditches, etc.).	Montana State Library
Hydrologic Units	The area of land surrounding a hydrologic feature (stream, river, lake) and includes all of the land area that drains into that feature	Natural Resources Conservation Service
Land Cover	Maps existing natural vegetation communities, human altered vegetation communities, human land uses, and recent disturbances from wildfire	Montana State Library
Mapping Control	Horizontal and vertical location information for survey control monuments and other mapping control data.	Montana State Library
Imagery	Aerial photographs that have been geometrically corrected to ensure for accurate scale, location, and measuring distances.	Montana State Library
Soils	Certified soil data developed by the USDA Natural Resources Conservation Service (NRCS).	Natural Resources Conservation Service
Structures & Addresses	Government assigned addresses and other structure point locations.	Montana State Library
Transportation	Road centerline location and attribute information.	Montana State Library
Wetlands & Riparian	Represents the extent, type, & approximate location of wetlands, riparian areas, & deepwater habitats mapped to National Wetland Inventory standards from recent aerial imagery.	Montana State Library and DEQ

[msl.mt.gov/GIS/msdi](http://msl.mt.gov/GIS/msdi)

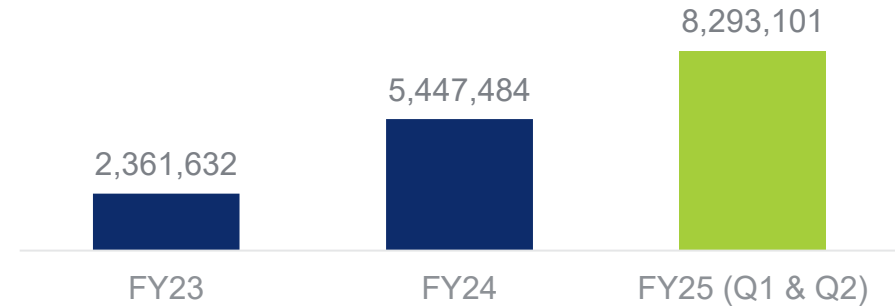




# Land Information

- Lead for several MSDI themes including Cadastral, Administrative Boundaries, Structures and Addresses, and Mapping Control.
- Montana Cadastral was the first statewide landownership dataset in the U.S. and update workflows involve local clerks, DOR, and MSL.
- 2009 economic impact study estimated that the cadastral application results in a \$9M annual ROI.
- Need for better data standards across state government to reduce duplication and ensure interoperability.

## Montana Cadastral Pageviews

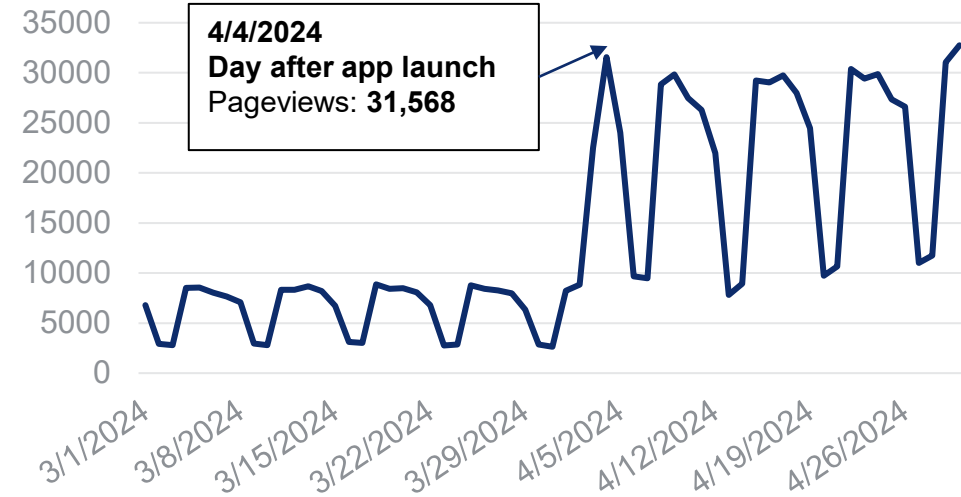


- Relevant statute [90-1-404 \(1b\) and \(1h\)](#)
- [Activities and cost drivers](#)
- Outcomes and key performance measures
  - [Montana Cadastral Application Usage dashboard](#)
  - [Montana Geo-Enabled Elections Precinct Split Status](#)
  - [Next Generation 9-1-1 GIS Readiness dashboard](#)
  - [Montana Cadastral Adjustments](#)

# Information Products

- Transitioning from custom-built to commercial and semi-custom tools for easier maintenance, including ServiceNow for help desk operations and a re-written, mobile-friendly Montana Cadastral.
- Refreshing GIS tools like the Digital Atlas and Data Bundler with modern, off-the-shelf solutions to improve accessibility.
- Moving away from costly on-premise data storage to cloud-based GIS architecture, reducing duplication and aligning with state customer experience goals.
- 2022 RFI determined the cost of modernizing GIS architecture to be ~\$750,000.

## Montana Cadastral Pageviews



- Relevant statute [22-1-103 \(2\)](#)
- [Activities and cost drivers](#)
- Outcomes and key performance measures
  - [Montana Cadastral Application Usage dashboard](#)
  - [Web Analytics dashboard](#)

# Data Coordination

- Established in 2016, this position supports data-driven planning, tracks work plans, and assesses progress toward agency goals.
  - Administers three annual federal reporting requirements, including MSL's State Program Report to IMLS to report on expenditures and program outcomes funded through our federal Library Services and Technology Act funding.
  - Collects metrics for programs like hotspot lending and conducts studies, such as a recent public library staffing and salary study.
  - Data-informed administration enhances MSL's ability to analyze services, plan effectively, and demonstrate impact.
- Relevant statute [22-1-103 \(2\)](#)
  - [Activities and cost drivers](#)
  - Outcomes and key performance measures
    - [MSL Statistics and Dashboards](#)
    - [Public Library Staffing & Salary Survey](#)
  - Federal Reporting
    - [Montana Public Libraries Survey](#)
    - [LSTA Grants to States, State Program Report](#)
    - [State Library Administrative Agencies Survey](#)

# Statewide GIS Coordination

MSL brings the right people to the table to build data and maps that support every facet of private and public commerce.

## GIS, Data, and Information Programs

Statewide GIS Coordination  
4 PB, 5 Modified

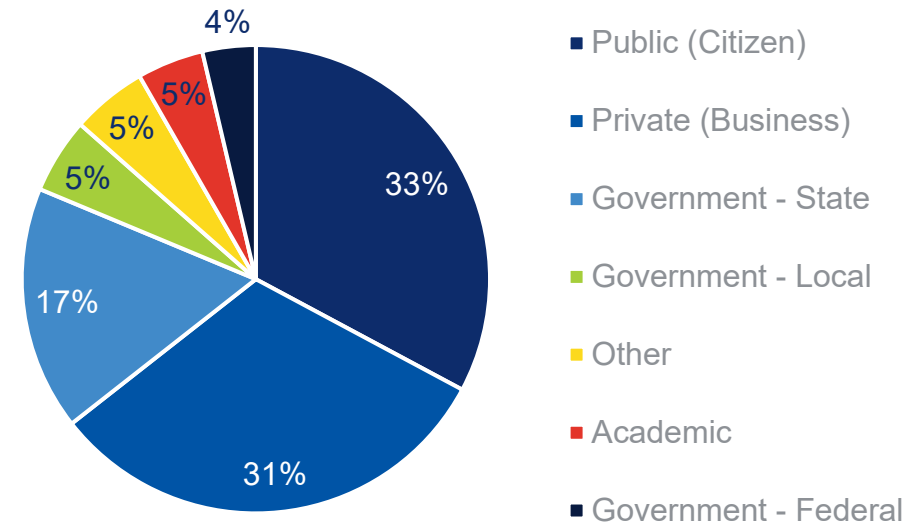
Account	Fund	Budget	Actual	Balance
61000 Personal Services				
	02069 SOS SSR	\$78,000	\$88,059	\$(10,059)
	02779 Montana Land Information	\$324,930	\$320,981	\$3,949
62000 Operating Expenses				
	01100 General Fund	\$0	\$45,187	\$(45,187)
	02069 SOS SSR	\$56,000	\$3,511	\$52,489
	02779 Montana Land Information	\$185,252	\$567	\$184,686
<b>TOTAL</b>		<b>\$644,182</b>	<b>\$458,304</b>	<b>\$185,877</b>



# Statewide GIS Coordination

- Works closely with governments and agencies to standardize and coordinate GIS efforts, ensuring alignment with national standards.
- Deployed ServiceNow to track and respond to GIS information requests.
- Strategic planning resulted in GIS data standards workflows and outreach plan to maintain high-quality data and meet partners' business needs.
- Robust GIS data collection supports diverse industries, enabling cost-effective decisions like using standardized address data for public safety and elections.
- MSL coordinated a 2023 summit on imagery which identified a wide range of use cases that could be met through a centralized imagery repository.

FY25 Support Cases by Customer Sector



- Relevant statutes [90-1-401](#), [90-1-402](#), [90-1-404](#)
- [Activities and cost drivers](#)
- [Outcomes and key performance measures](#)

# MT Geospatial Information Act Grant Program

Your local government may have received a grant from MSL to help build data and maps that benefit your community.

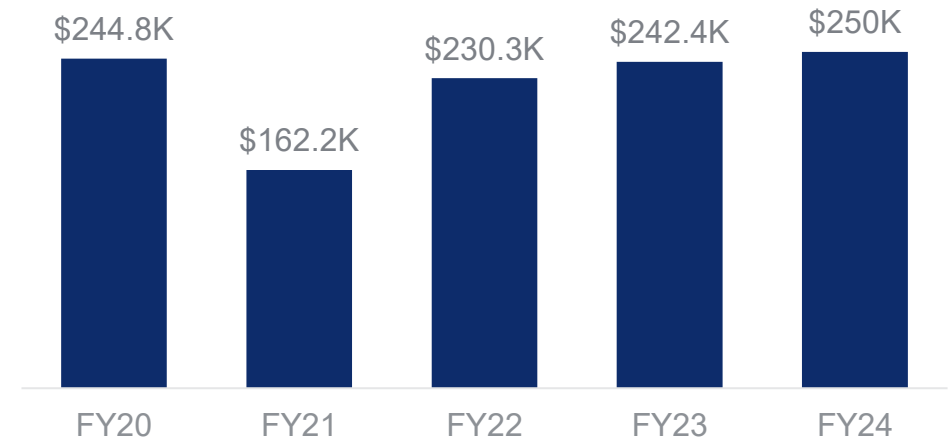
<b>GIS, Data, and Information Programs</b>
MGIA Grants 0 PB

Account	Fund	Budget	Actual	Balance
66000 Grants				
	02779 Montana Land Information	\$250,000	\$198,708	\$0
<b>TOTAL</b>		<b>\$250,000</b>	<b>\$198,708</b>	<b>\$0</b>

# MT Geospatial Information Act Grant Program

- Historically supported local GIS data creation for local needs and to enhance the Montana Spatial Data Infrastructure.
- Due to the sharp decline in MGIA revenue no MGIA grants were awarded in FY 25 and MSL does not anticipate making grant awards for the foreseeable future.
- Currently conducting an internal review that will consider feedback from past grant recipients.
- Factors under evaluation include necessary budget, the timing of grant awards, how grant priorities are determined, and how to improve administration of the grant program.

**Awarded Amount by State Fiscal Year**



- Relevant statutes [90-1-401](#), [90-1-404](#), [90-1-412](#)
- On hold due to lack of funds
- [Outcomes and key performance measures](#)

# Next-Generation 9-1-1

If you've ever had to call 911, you know your location is important for a rapid response. MSL is training your local government to create information necessary for modern emergency service technology.

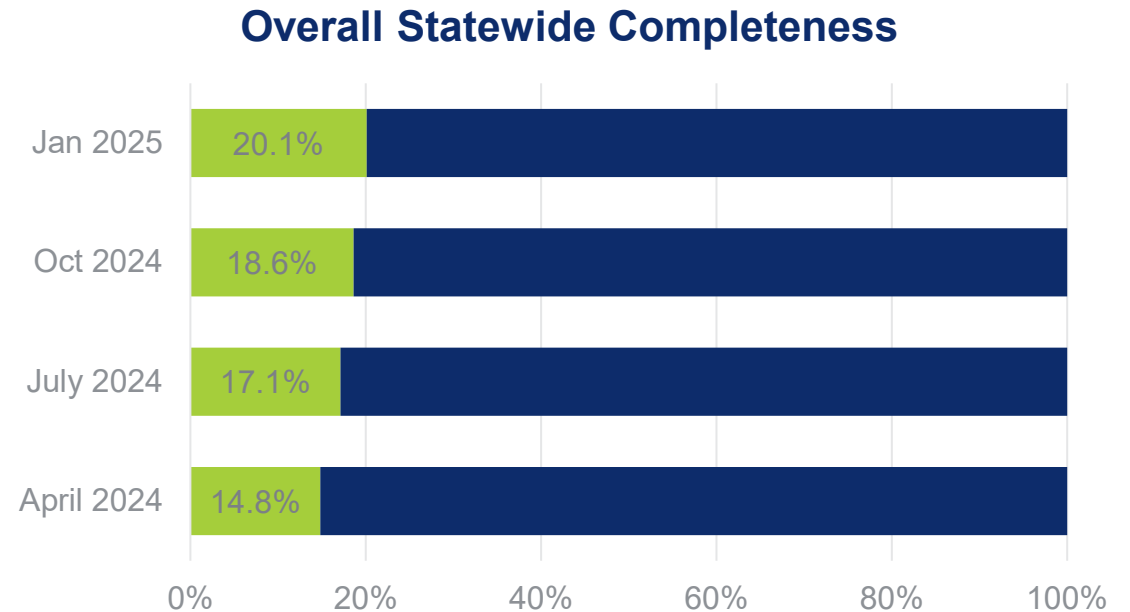
## GIS, Data, and Information Programs

Next Gen 9-1-1  
1 PB

Account	Fund	Budget	Actual	Balance
61000 Personal Services				
	02021 911 Funding	\$237,715	\$231,112	\$6,603
62000 Operating Expenses				
	02021 911 Funding	\$10,026	\$16,629	\$(6,603)
69000 Debt Service				
	02021 911 Funding	\$248,853	\$248,853	\$0
<b>TOTAL</b>		<b>\$496,594</b>	<b>\$496,594</b>	<b>\$0</b>

# Next Generation 9-1-1

- Montana has mapped structures and addresses for emergency response since post-9/11 federal funding.
- 2021 Legislature funded local governments to develop GIS data for modern emergency response, supported by MSL training and tools.
- MSL administers a software service to help local governments ensure location data meets public safety standards.
- Maximizes investment by supporting both public safety and related uses of location information.



- Relevant statute [10-4-310](#)
- [Activities and cost drivers](#)
- [Outcomes and key performance measures](#)

# Montana State Reference Network

Modern public and private industries alike require precise location data. MSL offers a subscription service to this data which saves Montanans time and money.

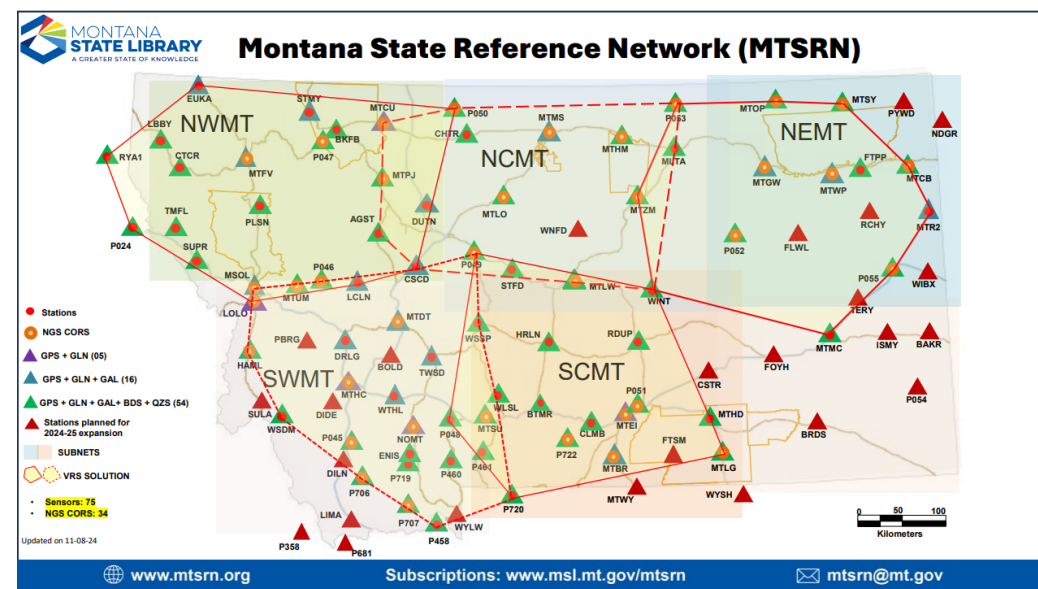
## GIS, Data, and Information Programs

### Montana State Reference Network 1 PB

Account	Fund	Budget	Actual	Balance
61000 Personal Services				
	02779 Montana Land Information	\$199,389	\$116,416	\$82,974
62000 Operating Expenses				
	02779 Montana Land Information	\$200,396	\$15,678	\$184,718
	06004 Electronic Government Services	\$0	\$(58)	\$58
	06025 MT State Reference Network-RTN	\$60,000	\$0	\$60,000
		\$459,785	\$132,035	\$327,750

# Montana State Reference Network

- State-owned real time positioning network, operated with the cooperation of partners.
- 2023 Legislature passed legislation to authorize MSL to operate the MTSRN using a subscription-based funding model.
- Increasing number of industries in the public and private sector rely on precise location information afforded by the MTSRN.
- MDT estimated that they save \$1.5 to \$2M annually in surveying costs using MTSRN.
- Realization of the full capacity of the MTSRN is dependent on statewide build out of the sensory network.



- Relevant statute [22-1-230](#)
- [Activities and cost drivers](#)
- [Outcomes and key performance measures](#)

Jennie Stapp  
State Librarian  
[jstapp2@mt.gov](mailto:jstapp2@mt.gov)  
(406) 444-3116

