



## Montana History Portal LEGO Challenge

The Montana State Library's History Portal, in partnership with (Library Name) proudly presents the Montana History Portal LEGO Challenge.

Our goal is to offer a LEGO challenge that will capture the attention and imagination of children and adults in a manner that will inspire interest in and education about Montana history, while using science, technology, art, and math skills (STEAM). We are calling all LEGO builders ages 5 and up to use the Montana History Portal Images as your inspiration for a cool LEGO build.

We are hosting two juried events – a build-at-home contest and a build-on-site contest.

### Contest Process and Rules:

1. Participants will need to register
2. Contest participants must use a scene from Montana History to inform their LEGO build. (See sample images and links to more images below. Look for an image that strikes your fancy and then build the scene.)
3. Contest participants should print the inspiration photo (at home or at the library before the event) and bring it with submissions.
4. Packaged LEGO kit submissions will not be judged. Please create your own design.
5. Participants may not register for both contests. Please select either the build-at-home or build-on-site contest.
6. Bring submissions (one per contestant) to the  
between  
on the day of the event.
7. Contest participants will fill out an entry form when they arrive to display with their LEGO build.
8. Place builds, printed photo, and submission form in the correct room for judging.
9. All submissions must be in place by  
for judging.



Built-at-home:

Use your own LEGOS and take your time to build a Montana history scene. You can do this in one of two ways:

1. Use an image from the Montana History Portal as inspiration for your build. Design something similar. Add working parts and details that may not be visible in the image.
2. Use an image from the Montana History Portal and build the exact scene. Include as many details from the image as possible in your replica.
3. Please keep your build under 3 feet square so there is enough space for all participants.

While building you will want to think about the size and scale of the items in the scene. Try different approaches to find the one that looks the best and works well for your project. Most of the images on the History Portal are in black and white, so use color to bring life to the image you choose.

Built-on-site:

Legos will be provided by the (Name of Library). Creations must be built at the library in (one or two shifts), (Event Times) They will be judged alongside other built-on-site creations. Select your inspiration photo before the event. You can print your photo at home or at the library before the event day.

Age groups, prize categories, and prizes

|                           |               |                |                 |                     |
|---------------------------|---------------|----------------|-----------------|---------------------|
| Age groups:               | 5-8-year-olds | 9–12-year-olds | 13–18-year-olds | 19-year-olds and up |
| <u>Built-at-home</u>      | Prize         | Prize          | Prize           | Prize               |
| Juried                    |               |                |                 |                     |
| <u>Built-on-Site</u>      | Prize         | Prize          | Prize           | Prize               |
| Juried                    |               |                |                 |                     |
| <u>People’s Choice</u>    | Prize         |                |                 |                     |
| Most votes of all entries |               |                |                 |                     |

Prize Sponsors



Rubric for judging:

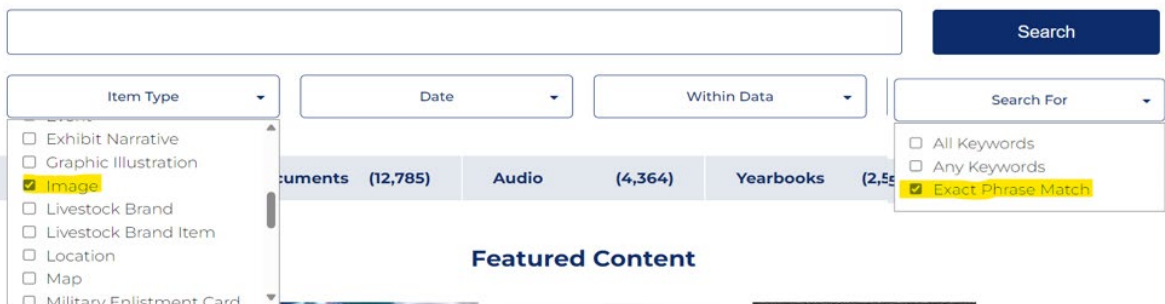
|                                 | 4 points                                    | 3 points  | 2 points                               | 1 point  |
|---------------------------------|---|---|--|--|
| Creativity                      | Shows creative interpretation.              | Show's student's ability to think "outside the box".                    | The design shows some creativity.      | No evidence of original thought.                     |
| Interpretation (completeness)   | There is great attention to detail.         | With more attention to detail, the project might have been outstanding. | The work appears to be unfinished.     | Project is incomplete or lacks attention to details. |
| Visual impact (overall quality) | The work has the power to "WOW" the viewer. | The work has lasting impact on the viewer.                              | The work holds the viewer's attention. | The work does not have visual impact.                |

## Ideas for Builds

The following categories are meant to inspire. The links in each category will show you more images related to the topic. We have over 42,000 images on the Montana History Portal, so if you do not see a category or image you want, please search our site for more images.

Here is how to search for images:

1. Start on the home page, <https://www.mtmemory.org/>



2. Enter your search terms in the search box.
3. From the Item Type dropdown menu, select “Image” – this tells our system you only want to get images in your results list.
4. If you are using a phrase, select “Exact Phrase Match” from the Search For dropdown menu. This tells our system to look for the phrase, not each word in the phrase.

### [Tractors and other heavy machines](#)



### [Tent camps](#)



### [Tipis/Lodges](#)



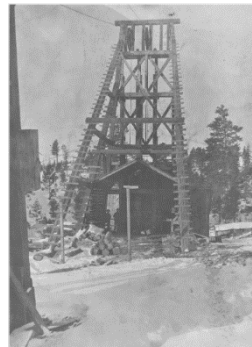
Wagons



Trestles



Mines and Mining Related Images



Boats and Ferry Boats



Ore Cars



Bridges



Ghost Towns



[Historic Homes](#)



[Planes](#)

